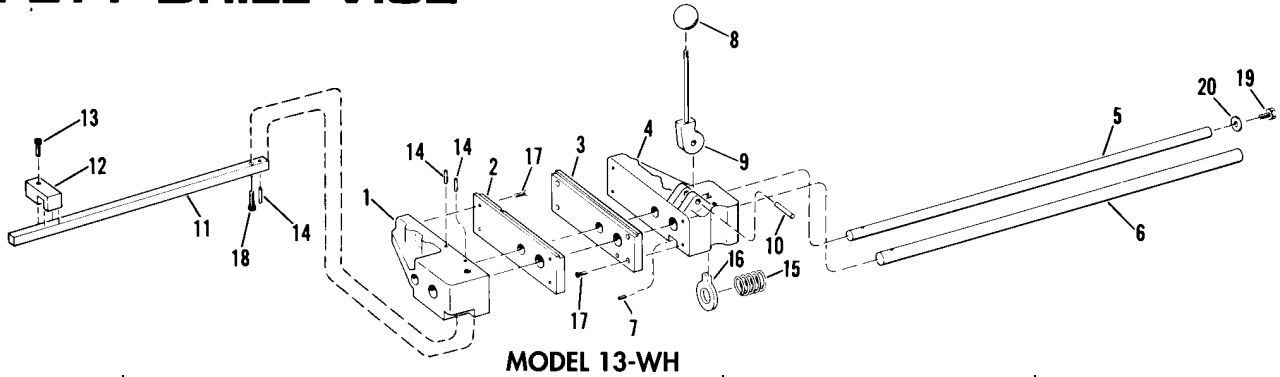


SAFETY DRILL VISE

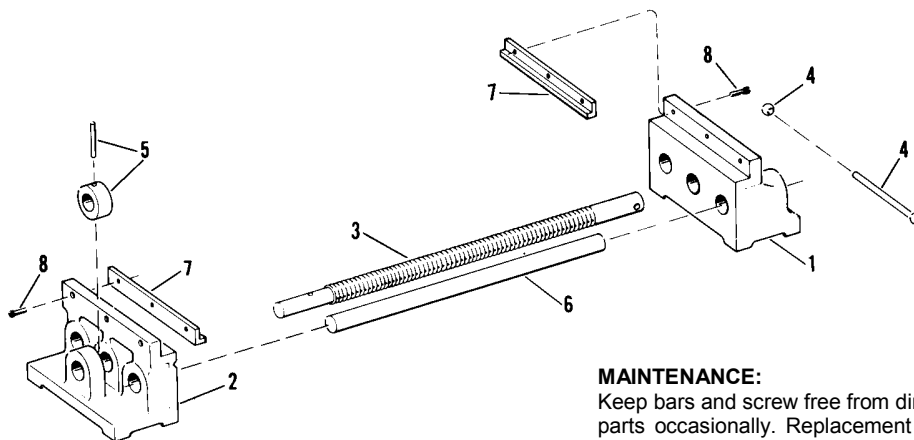


Index No.	Part Name	Part No.	Price
1	Stationary Jaw Casting (Note 1)	13WH-1	--
2 & 3	False Jaws (Set of 2)	13WH-2 & 3	\$62.08/pair
4	Movable Jaw Casting (Note 1)	12WH-4	--
5	Guide Bar	12WH-5	16.64
6	Locking Bar	12WH-6	52.94
7	1/4-20 x 3/4 Screw	12WH-8	1.74
7A	1/4-20 x 1/2 Screw	12WH-8	obsolete
8	Knob -- 3/8-24 thread	SV-6821	3.48
9	Handle Lever Assembly	12WH-11	23.23
10	5/16 x 1 1/8 Rollpin	12WH-12	1.16
11	Mounting Bar	13WH-13	31.76
12	Mounting Block	13WH-14	24.68
13	3/8-1 6 x 1 1/2 Screw	13WH-15	1.60
14	3/16 x 1 1/8 Rollpin (3 required)	2316-A	1.02
15	Spring	PA-6817	8.71
16	Locking Ring	SV-6816	30.49
17	1/4-20 x 1/2 Screw (8 required)	30-1/2	0.87
18	1/4-20 x 7/8 Screw	305-8	0.87
19	5/16-24 x 1/2 Screw	H-14	0.87
20	1/4" USS Washer	305-26	0.58

Note 1. Prices not shown, as replacement jaw castings are not available.

SEE OPERATION AND MAINTENANCE INSTRUCTIONS FOR GRIP-MASTER VISES ON THE GRIP-MASTER VISES PAGE.
WHEN ORDERING PARTS, INDICATE PART NUMBER, MODEL NUMBER AND PRICE.

DRILL PRESS VISE (Table on next page)



MAINTENANCE:

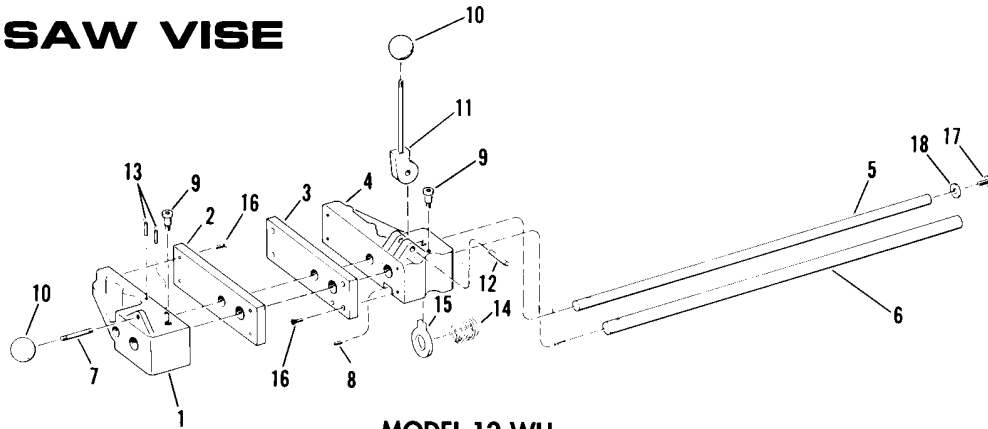
Keep bars and screw free from dirt and chips. Oil moving parts occasionally. Replacement parts are available for immediate shipment from factory stock, or you may order through your local Heinrich distributor.

Index No.	Part Name	MODEL NUMBER					
		10		20		30	
		Part No.	Price	Part No.	Price	Part No.	Price
1	Movable Jaw Casting (Note 1)	10A	--	20A	--	30A	--
2	Stationary Jaw Casting (Note 1)	10B	--	20B	--	30B	--
3	Screw	1013	\$27.59	2313	\$59.53	2313	\$59.53
4	Handle, with Two Buttons	1015	7.26	2315	8.71	2315	8.71
5	Collar, with Rollpin	1016	7.26	2316	11.62	2316	11.62
6	Guide Bar	1014	7.56	2014	18.15	814	34.79
7	Jaw Inserts, regular (set of 2)	319	15.97	619	30.49	819	39.20
7	Jaw Inserts, hardened (set of 2)	319H	21.78	619H	42.11	819H	50.82
8	1/4-20 x 3/4 Screw (6 required)	--	--	30-3/4	1.67	30-3/4	1.67
8	1/4-20 x 1/2 Screw (4 required)	30-1/2	0.87	--	--	--	--

Note 1. Prices not shown, as replacement jaw castings are not available. Jaws must be machined in pairs.

WHEN ORDERING PARTS, INDICATE PART NUMBER, MODEL NUMBER AND PRICE.

BAND SAW VISE



MODEL 12-WH

Index No.	Part Name	Part No.	Price
1	Stationary Jaw Casting (Note 1)	12WH-1	--
2 & 3	False Jaws (Set of 2)	13WH-2 & 3	\$62.08/pair
4	Movable Jaw Casting (Note 1)	12WH-4	--
5	Guide Bar	12WH-5	16.64
6	Locking Bar	12WH-6	52.94
7	Handle Stud	12WH-7	3.78
8	1/4-20 x 3/4 Screw	12WH-8	1.74
8A	1/4-20 x 1/2 Screw	12wh-8A	obsolete
9	Chain Stud	3301-9	0.51
10	Knob -- 3/8-24 thread (2 required)	SV-6821	3.48
11	Handle Lever Assembly	12WH-11	23.23
12	5/16 x 1 1/8 Rollpin	12WH-12	1.16
13	3/16 x 1 1/8 Rollpin (2 required)	2316-A	1.02
14	Spring	PA-6817	8.71
15	Locking Ring	SV-6816	30.49
16	1/4-20 x 1/2 Screw (8 required)	30-1/2	0.87
17	5/16-24 x 1/2 Screw	H-14	0.87
18	1/4" USS Washer	305-26	0.58

Note 1. Prices not shown, as replacement jaw castings are not available. Jaws must be machined in pairs.

SEE OPERATION AND MAINTENANCE INSTRUCTIONS FOR GRIP-MASTER VISES ON THE GRIP-MASTER VISES PAGE.

WHEN ORDERING PARTS, INDICATE PART NUMBER, MODEL NUMBER AND PRICE.